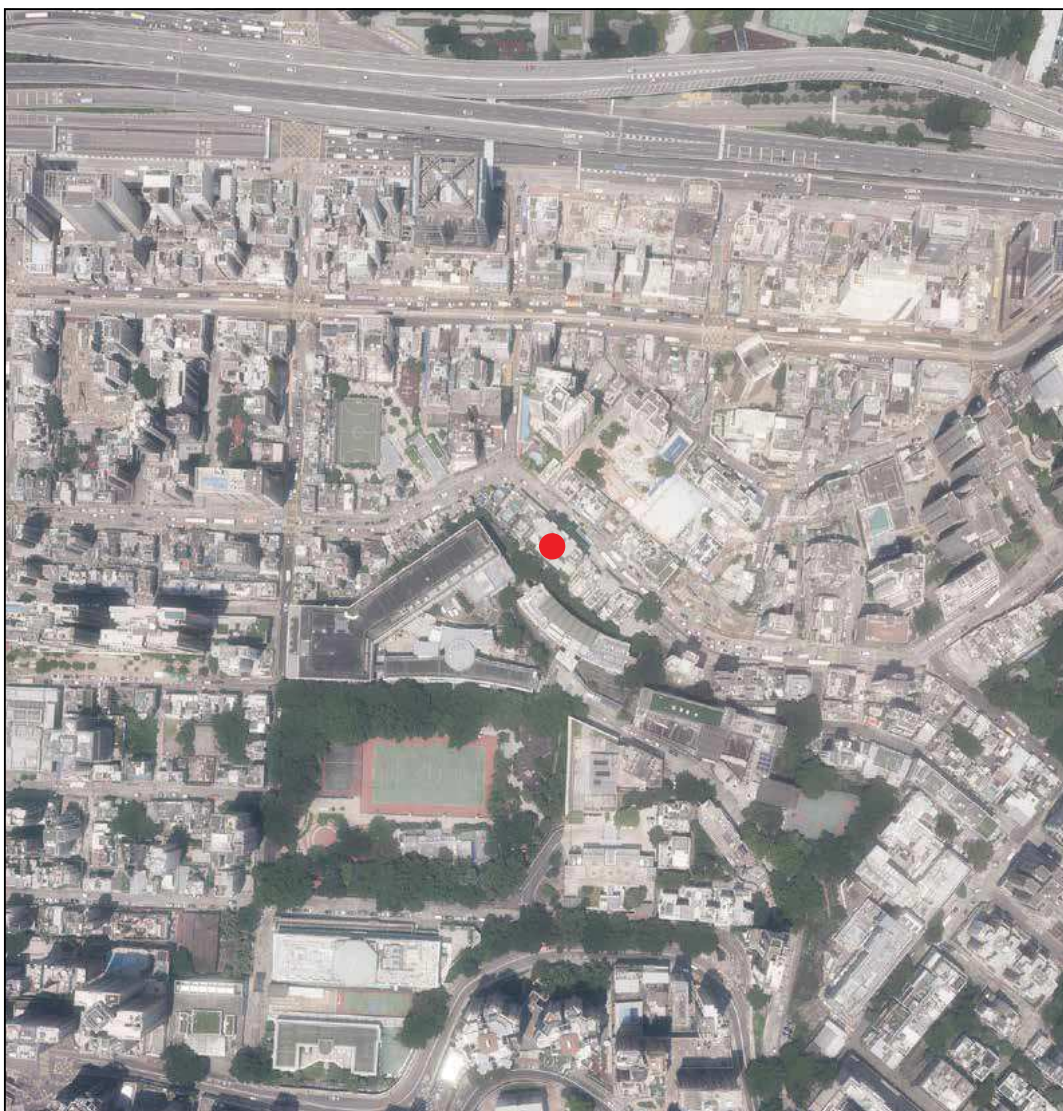


發展項目的鳥瞰照片 AERIAL PHOTOGRAPH OF THE DEVELOPMENT



摘錄自地政總署測繪處在 6,000 呎的飛行高度拍攝之鳥瞰照片，照片編號 E225401C，飛行日期：2024 年 8 月 7 日。

Adopted from part of the aerial photograph taken by the Survey and Mapping Office of the Lands Department at a flying height of 6,000 feet, Photo No. E225401C, date of flight: 7 August 2024.

● 發展項目的位置
Location of the Development

附註：

1. 發展項目的鳥瞰照片之副本可於售樓處開放時間內免費查閱。
2. 賣方建議準買方到有關發展地盤作實地考察，以對該發展項目、其周邊地區環境及附近的公共設施有較佳了解。
3. 由於發展項目的邊界不規則的技術原因，此鳥瞰照片所顯示的範圍可能超過《一手住宅物業銷售條例》所規定的範圍。
4. 香港特別行政區地政總署測繪處版權所有，未經許可，不得複製。

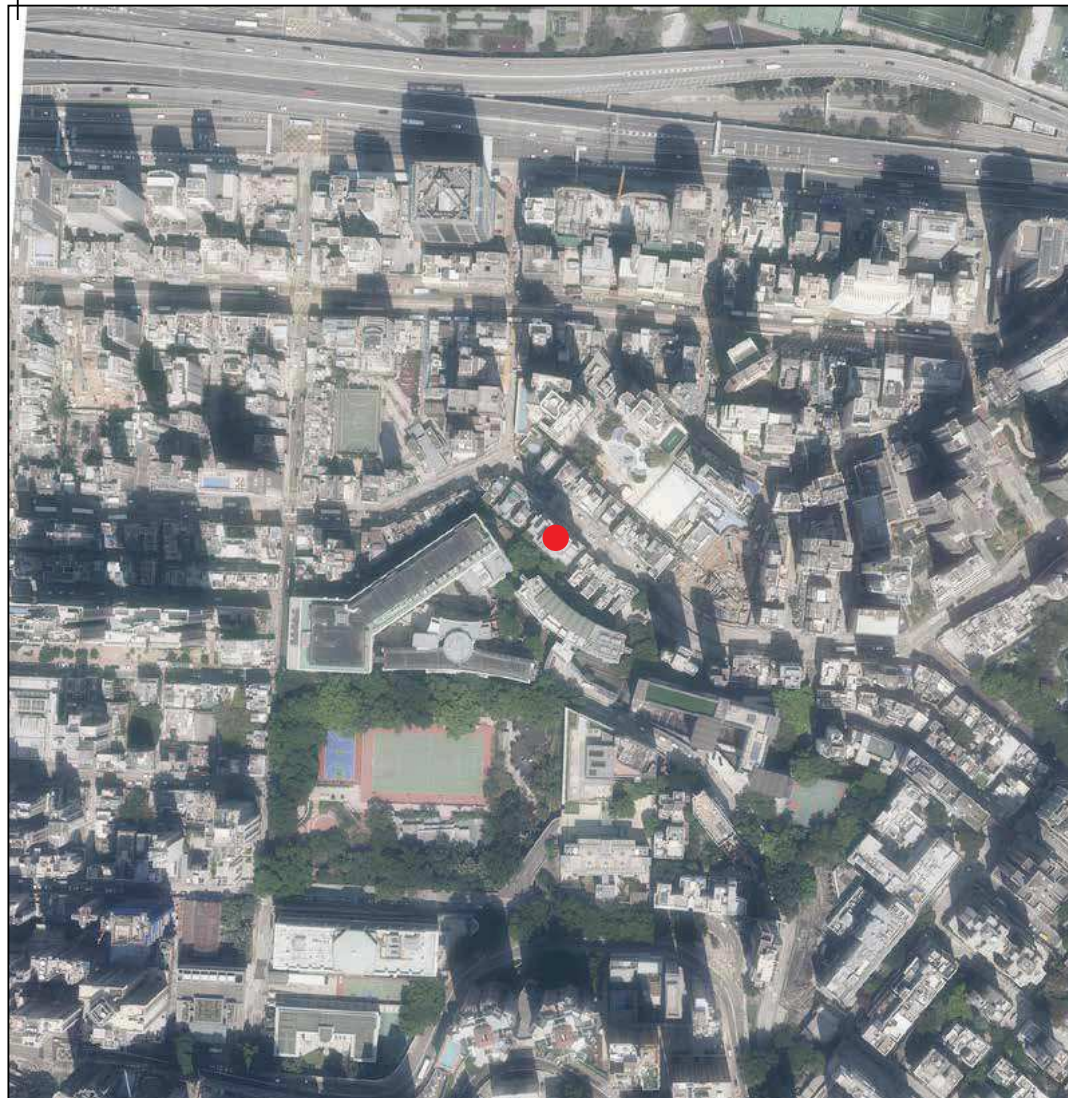
Notes:

1. Copy of the aerial photograph of the Development is available for free inspection at the sales office during opening hours.
2. The vendor advises prospective purchasers to conduct on-site visit for a better understanding of the development site, its surrounding environment and the public facilities nearby.
3. The aerial photograph may show more than the area required under the Residential Properties (First-hand Sales) Ordinance due to the technical reason that the boundary of the Development is irregular.
4. Survey and Mapping Office, Lands Department, The Government of HKSAR © Copyright reserved - reproduction by permission only.

發展項目的鳥瞰照片 AERIAL PHOTOGRAPH OF THE DEVELOPMENT

This blank area falls outside the coverage of the relevant aerial photograph and exceeds 250m from the Boundary of the Development.

本空白範圍並不覆蓋有關鳥瞰照片及超出發展項目界線250米之外。



摘錄自地政總署測繪處在 6,900呎的飛行高度拍攝之鳥瞰照片，照片編號 E255342C，飛行日期：2025年 3月 22日。

Adopted from part of the aerial photograph taken by the Survey and Mapping Office of the Lands Department at a flying height of 6,900 feet, Photo No. E255342C, date of flight: 22 March 2025.

● 發展項目的位置
Location of the Development

附註：

1. 發展項目的鳥瞰照片之副本可於售樓處開放時間內免費查閱。
2. 賣方建議準買方到有關發展地盤作實地考察，以對該發展項目、其周邊地區環境及附近的公共設施有較佳了解。
3. 由於發展項目的邊界不規則的技術原因，此鳥瞰照片所顯示的範圍可能超過《一手住宅物業銷售條例》所規定的範圍。
4. 香港特別行政區地政總署測繪處版權所有，未經許可，不得複製。

Notes:

1. Copy of the aerial photograph of the Development is available for free inspection at the sales office during opening hours.
2. The vendor advises prospective purchasers to conduct on-site visit for a better understanding of the development site, its surrounding environment and the public facilities nearby.
3. The aerial photograph may show more than the area required under the Residential Properties (First-hand Sales) Ordinance due to the technical reason that the boundary of the Development is irregular.
4. Survey and Mapping Office, Lands Department, The Government of HKSAR © Copyright reserved - reproduction by permission only.